

**De Dutch**  
Since 1975

## De Kids' Menu

### For Kids 10 and Under \$9

Meals include fruit to start, chosen entrée, an English Bay Cookie, and a choice of Sun-Rype® apple juice, 2% milk, chocolate milk, or a soft drink.  
*Sub for fresh pressed orange juice. 2.75 Availability subject to location.*

### Kids' Pannekoeken

*A smaller version of the traditional pannekoek.*

**CHOICE OF MEAT & EGG**

**ICING SUGAR** 🍴

**CHOCOLATE SPRINKLES** 🍴

**FRUIT LOOPS** 🍴

**SUN-RYPE® APPLESAUCE OR APPLE, SUGAR, CINNAMON & WHIP** 🍴

**FRUIT TOPPING & WHIP** Your choice of strawberry, blackberry, blueberry, raspberry, peach or triple berry fruit topping. 🍴

### Breakfast Bites

**KIDS' DELUXE BREAKFAST** Served with one egg, hash browns and choice of meat, choice of toast.

**FRUIT CUP** 🍴

With a piece of toast.

**FRENCH TOAST** Your choice of strawberry, blackberry, blueberry, raspberry, peach or triple berry fruit topping. 🍴



### Lunch

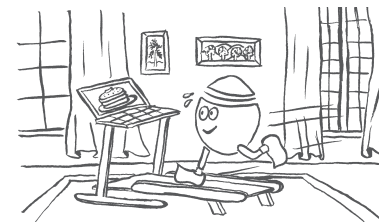
*Served with special recipe hash browns or garden green salad.*

**SANDWICH** With choice of cheese, edam or cheddar, ham or no ham, grilled or not, choice of bread.

**NUTELLA SANDWICH**

**HAMBURGER** Plain with a beef burger patty.

**SOUP OF THE DAY** Made in house.



🍴 Vegetarian-friendly dish

BREAKFAST

LUNCH

**De Dutch**  
Since 1975

Playtime

COLOUR



PUZZLES

## Extra Scrambled

Can you unscramble these words?

- NENOAKPEK \_\_\_\_\_
- LUTPI \_\_\_\_\_
- OGCL \_\_\_\_\_
- OEOCIK \_\_\_\_\_
- IURFT \_\_\_\_\_
- CIUJE \_\_\_\_\_
- NLDLWMII \_\_\_\_\_
- LPAME RYSPU \_\_\_\_\_

Answer: Pannenkoek, tulip, clog, cookie, fruit, juice, windmill, maple syrup

## De Maze

Can you get to the real whipped cream in the centre of the pannekoek?

